

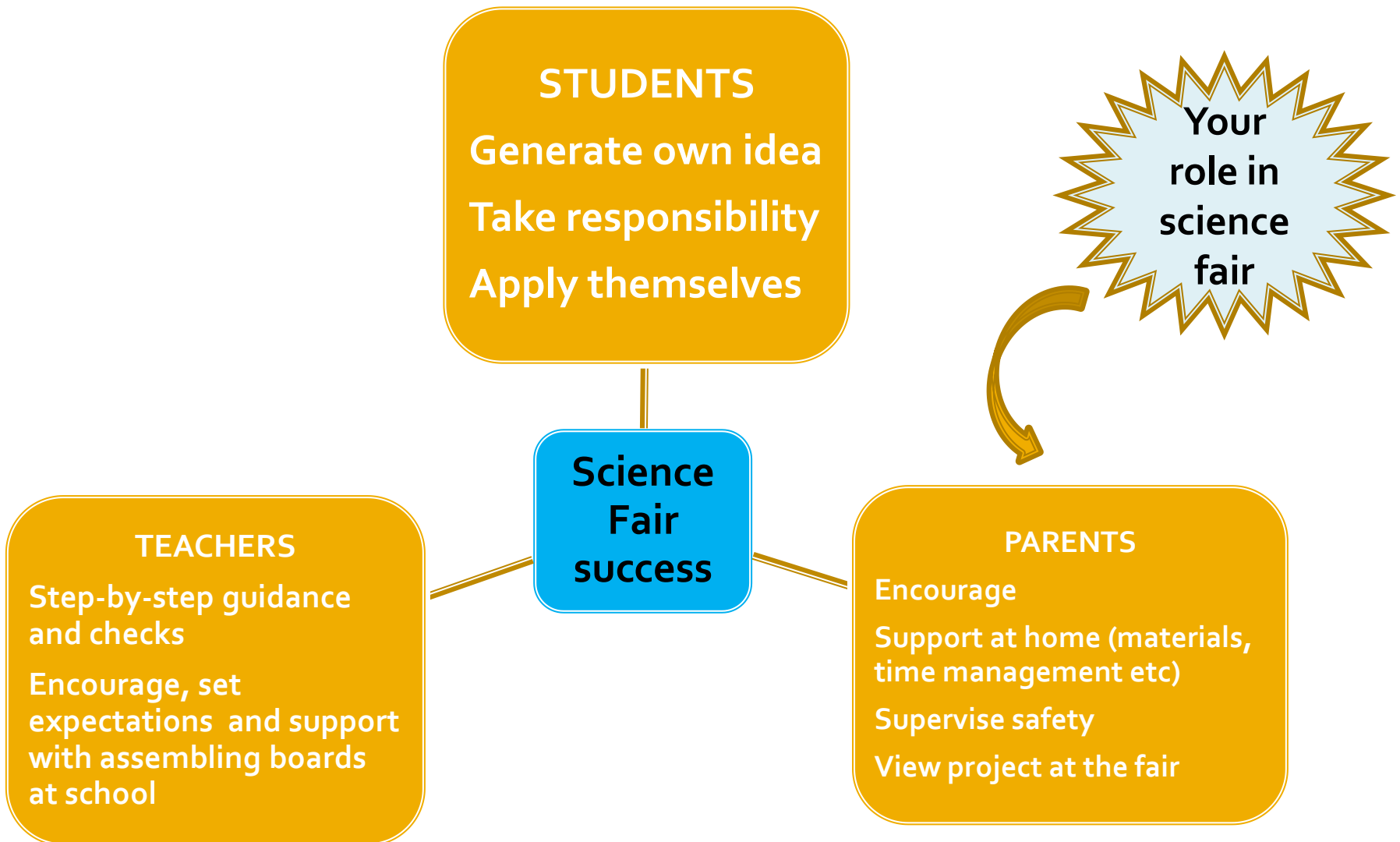


SCIENCE FAIR 2014

Participating in the school science fair is a journey of scientific inquiry.

- student support
- school organisation

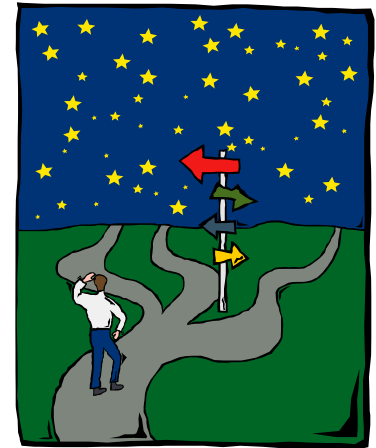
Support & Partnership



ORGANISATION /TIMELINE

TERM 2: Week 1 & 2

- Science Fair Advisor in Areas
 - initial activity to help with selecting a topic
- Topic/question finalised
- Fair Testing Unit in class to aid students in setting up own experiments
- Step-by-Step guide given to students for planning week by week on a timeline, to aid with **time management**



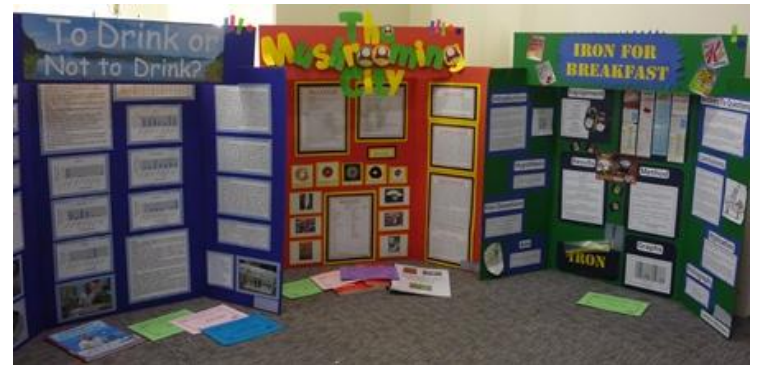
ORGANISATION /TIMELINE

TERM 2: Weeks 3 – 5

- Research, hypothesis, experiment completed and data collated
- SCIENCE ROADSHOW – 29/30 May (\$7, special rate for FCI)
- Science Fair boards available through the school in Week 5 (\$10).

Colour selection – black, white, blue, green, yellow or red

(available on a first come first served basis)



ORGANISATION /TIMELINE

TERM 2: Weeks 6 – 8

- Analysis of results and conclusions drawn
- Boards assembled at school with correct sequence of headings
- Evaluation completed by end of Week 8, using these criteria:
 - **Scientific Thought & Understanding**
 - Originality
 - Technical and Graphic Skills
 - Thoroughness and Effort
 - Presentation
- Certificates awarded for above criteria (L5+)
- Best projects in the school sent to Mrs Dunbar for possible selection for the Manukau Science & Technology Fair



ORGANISATION /TIMELINE

School Science Fair 2014

TERM 3: Week 1

- Monday - touch up displays
 - organise in categories
- Tuesday - set up display in Hall
 - Public viewing (pm)
- Wednesday - Public viewing (am)
 - School viewing (Bl 3 & 4)
 - Public viewing (pm)
- Thursday – collect displays from Hall and return to Areas to take home (except Manukau Science Fair entries to be taken to the Science Room)

